

TIPE AAC COMPUTERIZED LABORATORIUM BAHASA



MASTER SIDE

MASTER KONTROL

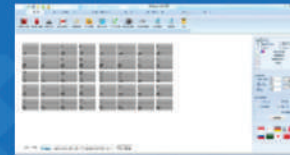
Pengendali utama sistem Lab Bahasa yang berbasis software komputer Bisa dilengkapi dengan sistem touchscreen (optional)

MGLab ML550



SYSTEM CONTROL

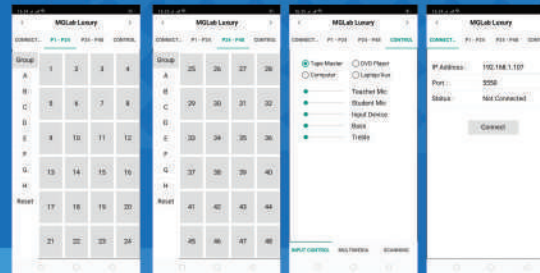
Micro Control System with internal memory, RS 232 Control
Digital Circuit Operating Voltage 5 VDC +/-3% TTL Level
Data Speed 19200 Kbps
High Power Amplifier
Tone Control DC Voltage
Pre Amplifier DC Voltage



Output Headset Earphone: 8-16Ω Output Room Speaker : 8Ω
Power Supply : 220/240V - 50Hz
Power Consumption : 300-400 Watt
Input : Headset 30-60Ω Master Tape, Computer, DVD, Audio Recorder, Auxiliary

Frequency Response : 100-10000 Hz S/N Ratio 50 dB
Maximum absolute ratings

1. Operating Voltage 24 VDC (Audio Circuit)
6 VDC (Digital Circuit)
2. Operating Temperature 85°C
3. Stand by temperature 30°C



SOFTWARE CONTROL

1. Listening function
2. Intercom function
3. Writing function with keyboard control (optional)
4. Conversation
5. Video Repeater
6. Recording audio format mp3
7. Visualized Attender names and layout
8. Preprogrammable Seat Layout
9. User Friendly Graphical User Interface
10. Databased class, teacher, student as user entries
11. Evaluator Quiz (optional)
12. Keyboard Control
13. Inzo Features
14. Group Selector
15. Autorun with Adjustable Delay
16. Integrated on Android Device

KOMPUTER MASTER

Intel Core i5-11400; Acer - Aspire Core i5
RAM 4GB DDR4;
HDD 1TB;
Intel UHD Graphics 730 2GB;
DVD RW;
Display 21,5 inch;
Keyboard Mouse;
Win 10 Home



HEADSET TEACHER

Mic MGLab MG 888MV
Type : Condenser
Freq Response : 30 - 16.000 Hz
Impedence : 32Ω, Sensitivity : -58+/- -3dB
Earphone
Freq Response : 20 - 16.000 Hz
Impedance : 32Ω, Sensitivity : 105 dB/mW, Cable length : 1,5 m
Connector/plug : 3 pin



MIC WIRELESS

Frequency Stabilization : <±30
Dynamic Range : >80dB
Total Harmonic Distortion : >0.5%
Frequency Response : 40Hz - 18KHz ±3dB
Signal-to-Noise Ratio : ≥ 100dB
Signal/Noise Ratio : >82dB

Shure



UPS 700 VA

Capacity 700 VA;
360 watt;
50/60Hz +/- 1 Hz;

APC - 700 VA



MEJA MASTER

Bahan : Particle Board 15mm dengan laminasi PVC Sheet warna Beach model U / Standart
Barang Buatan pabrik (knock down system)
Ukuran model U : 210 x 120 x 75 cm
Ukuran model Standart : 180 x 80 x 75 cm



ARION INDONESIA

www.arionindonesia.co.id
Jl. Lodan 129 Malang
arion.indonesia@yahoo.co.id

KURSI MASTER

Kursi dapat diputar, mempunyai sandaran lengan, tinggi dapat diatur.



AUDIO RECORDER

Support MP3, WMA, WAV; Support USB/SD memory; Recorder rate: highest bit rate for 192 Kbps, WAV format; LCD display, support multilateral languages, enter subdirectory, scan folders, display lyricsLine in record, the external audio source can be recorded into the SD card or U disk; Connect computer: USB sound card; Additional functions: calendar, clock, alarm clock, can by USB cable connect to computer to download SD card; IR remote control; Support Multilanguage, reach to 24 countries



MEJA SISWA (TWINBOOTH)

Model Twin Booth
Bahan: Particle Board 15mm dengan laminasi PVC Sheet warna Beech dengan kaca & nomor siswa di bagian depan
Ukuran: 123 x 118 x 54 cm
Barang buatan pabrik (Knock Down System)



HEADSET SISWA

Mic
Type : Condenser
Freq Response : 30 - 16.000 Hz
Impedance : 32Ω
Sensitivity : -58 +/- 3dB

Earphone
Freq Response : 20 - 16.000 Hz
Impedance : 32Ω
Sensitivity : 1053m
Cable length : 1,5 m
Connector/plug : 3 pin



AUDIO RECORDER

Support MP3, WMA, WAV; Support USB/SD memory; Recorder rate: highest bit rate for 192 Kbps, WAV format; LCD display, support multilateral languages, enter subdirectory, scan folders, display lyricsLine in record, the external audio source can be recorded into the SD card or U disk; Connect computer: USB sound card; Additional functions: calendar, clock, alarm clock, can by USB cable connect to computer to download SD card; IR remote control; Support Multilanguage, reach to 24 countries



STUDENT SIDE

STUDENT CONSOLE

MG LAB (Student Console)
Minimal memiliki fungsi utama sebagai berikut :
* Menggunakan lampu LED
* Record Out
* Fungsi memanggil/Call; siswa tinggal menekan tombol "Call" untuk menghubungi guru.



Spesifikasi

Frequency Response : 63-10.000Hz
S/N Ratio : > 50dB
Distortion : < 3%
Input Mic : - 60 dB
Intercom : - 15 dB, 5000
Headset : - 10 dB

STUDENT CHAIR

Bahan stainless steel, jenis lipat (Folding Chair)
Tinggi : 810 mm
Lebar : 375 mm,
Panjang : 395 mm



KELENGKAPAN

INSTALASI KABEL AUDIO dan POWER

Kabel : LAN
Connector : Rj45, Kabel RCA, Kabel Listrik



ROOM SPEAKER

Speaker Size : 8 inch (Three Way)
Power : 20.000 PMPO



LCD PROJECTOR BENQ 3600 Lumens

+ Wall Screen + pasang
Sistem Projector : DLP Technology
Resolusi Native : SVGA (800 x 600)
Brightness : 3600 Lumens
Rasio Kontras : 20,000:1
Rasio Aspek : 4:3
Rasio Besaran (Zoom) : 1.1:1
Tipe Lampu : 200W
Kesesuaian Video : NTSC, PAL, SECAM
Daya / Power : AC100 to 240V, 50/60Hz
Dimensi (WxHxD)(mm): 296 x 120 x 221



KARPET + PEMASANGAN

Bahan terbuat dari serabut plastik, tebal 4mm Polypropylene, Lebar 4 meter dan panjang mengikuti ukuran ruangan lab & dilapisi karpet



BOX STAGE KABEL dan BOX STAGE KABEL

Box Stage Master bahan multiplex dilapisi karpet, ukuran 240x180x20 cm
Box Stage Kabel bahan multiplex dilapisi karpet, ukuran 240x60x12 cm



OPTIONAL

EVALUATOR QUIZ

with Keyboard and LCD Display

Proses Instalasi sederhana, Dongle security, Klien Up to 50 channel, Kompatibel dengan tipe Lab Bahasa Digital apapun, LCD Display, Keyboard PS2/Keypad Numerik, Registrasi acak di klien manapun, 5 tombol digital quiz, Aplikasi Software mudah dan familiar (standart office), Support Double Exam, Support import/export data to excel, Modem wavecomm for SMS, Tampilan Grafik report, Tampilan Nilai Mean, Median dan Modus, Detail history jawaban, Auto SMS report to client Manual SMS to client, Pembuatan soal bisa dilakukan di Ms. Word

